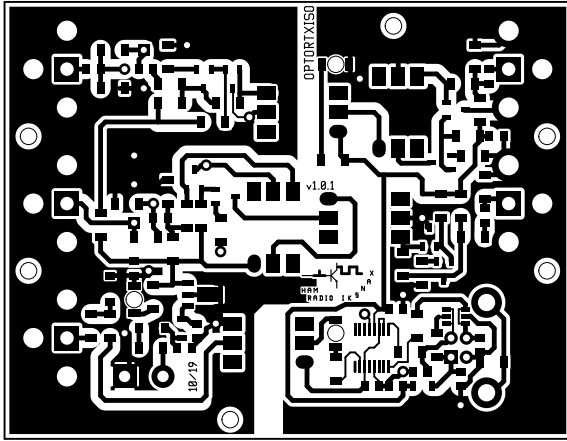
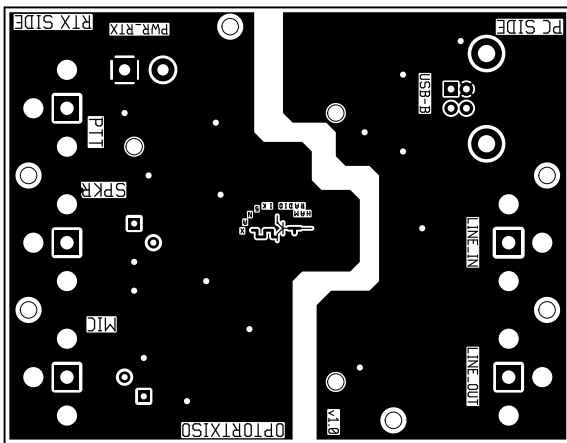


1. Table of Contents (This Page)

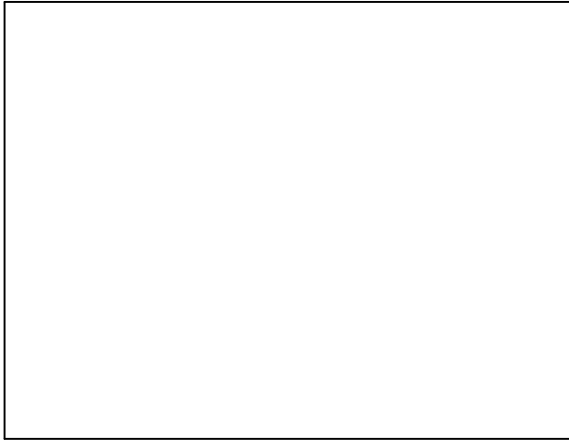
Created on Wed Jan 8 16:59:20 2020

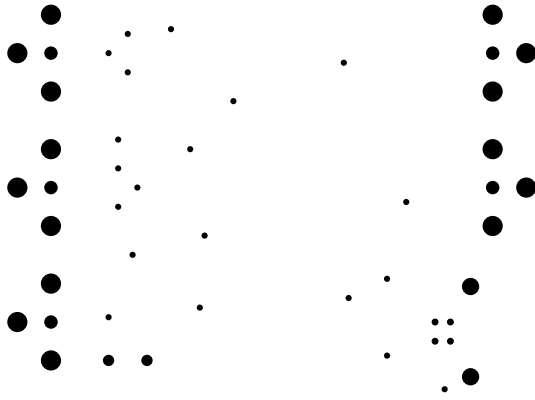
2. top
3. bottom
4. outline
5. plated-drill
6. unplated-drill
7. componentmask
8. soldermask
9. topsilk
10. bottomsilk
11. toppaste
12. topassembly
13. bottomassembly
14. fab



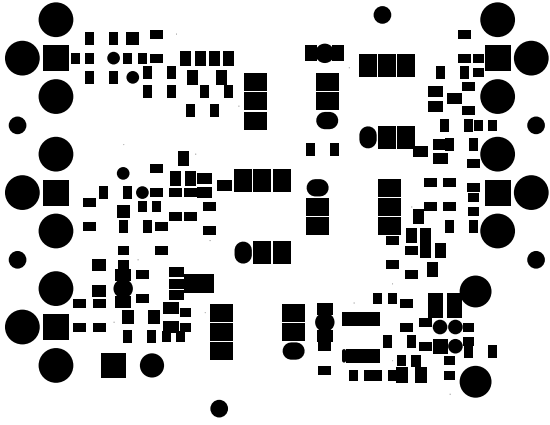


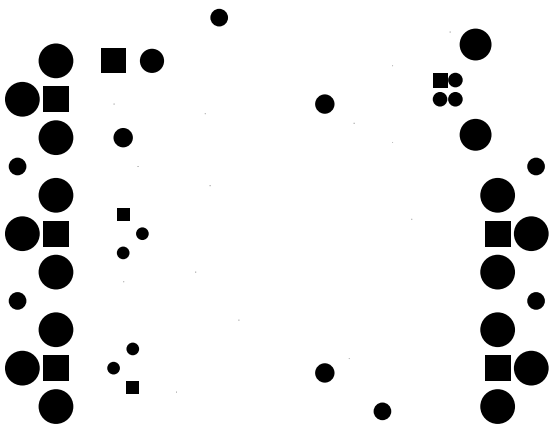
OPTORTXISO, bottom (mirrored), scale = 1:1.000  
optortxiso-1,0.1.pcb



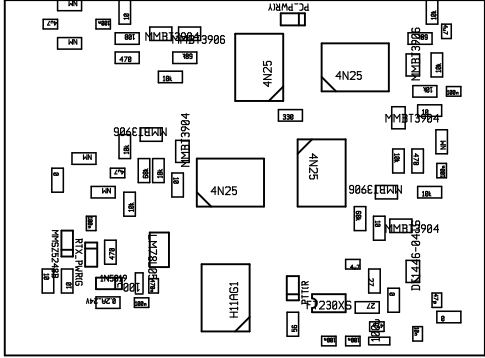


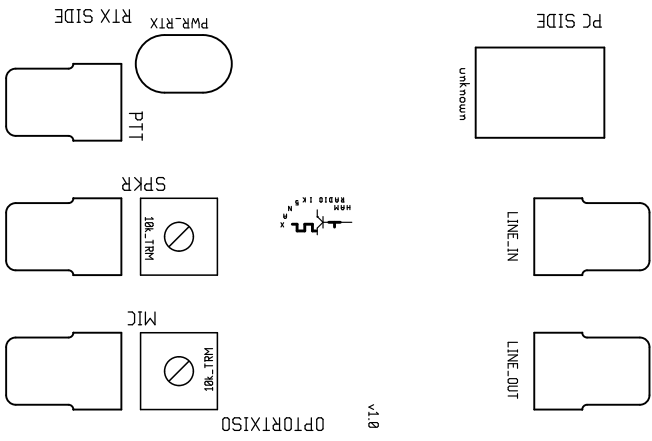


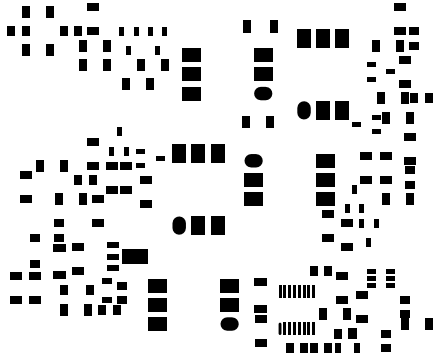


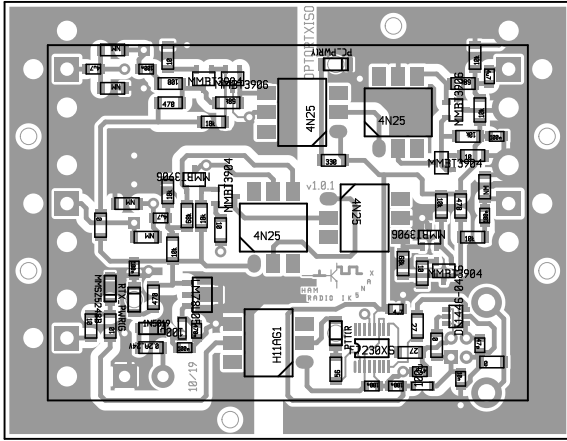


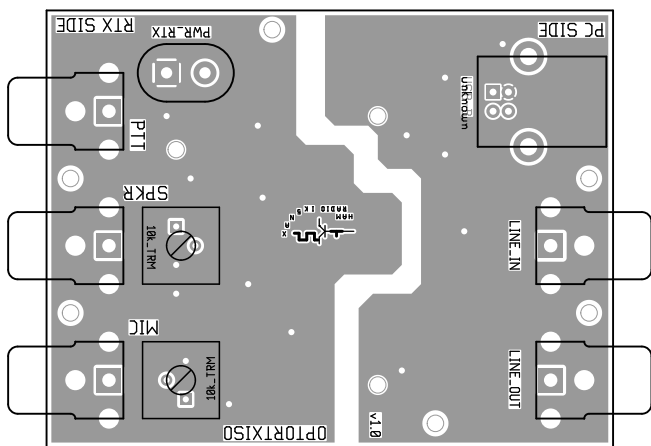












OPTORTXISO, bottom assembly (mirrored), scale = 1:1.000  
optortxiso-1.0.1.pcb

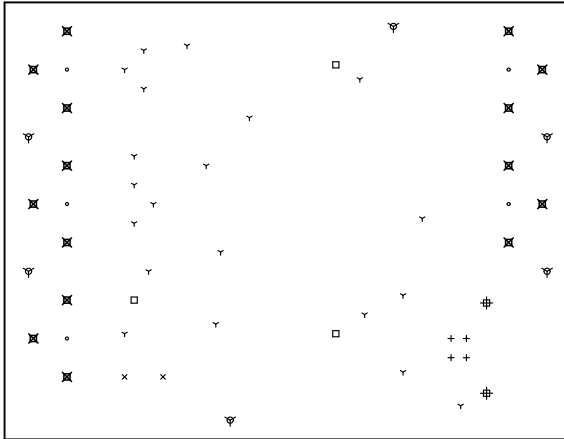
There are 8 different drill sizes used in this layout, 57 holes total

| Symbol | Diam. (Inch) | Count | Plated? |
|--------|--------------|-------|---------|
| Y      | 0.032        | 20    | YES     |
| +      | 0.036        | 4     | YES     |
| x      | 0.059        | 2     | YES     |
| o      | 0.070        | 5     | YES     |
| □      | 0.085        | 3     | NO      |
| ∅      | 0.086        | 6     | NO      |
| #      | 0.090        | 2     | YES     |
| ⊗      | 0.105        | 15    | YES     |

Title: OPTORTXISO - Fabrication Drawing

Author: lapo

Date: Wed Jan 8 15:59:21 2020 UTC



Board outline is the centerline of this path